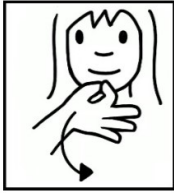


Inflection

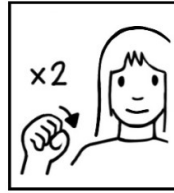
An inflection is a sign which have been modified to show its location, direction, aspect, and/or intensity, etc, for example:



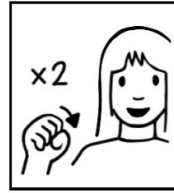
ASK
normal



ASK-ME
(inflected)
(movement)



YES
normal



YES
(inflected)
(happy NMF)

Initialisation

Initialisation are signs that uses letters, mostly done twice:



MOTHER



FATHER



KITCHEN

They can also be made using one hand:



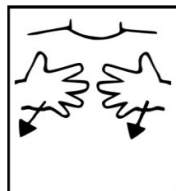
COUSIN

Interjection

A sign which expresses an emotion and is often used alone, for example:



WOW!



SURPRISE!



HOW-DARE-YOU!