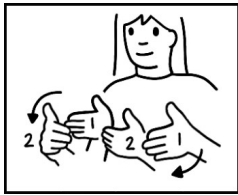


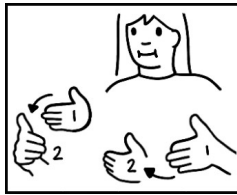
Sign Modification - Nouns - Size and Shape

Some Auslan noun signs can be modified to show descriptive information about its size and shape. Below are some examples.

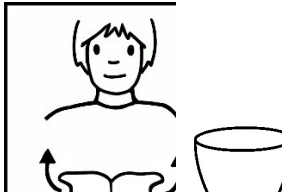
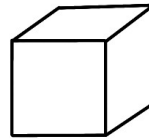
NOTE: NMF are usually included when modifying the sign's shape: Raised shoulders and OO mouth shape when modifying a sign to make it narrow or pointy, and puffed cheeks when making the shape of the sign bigger.



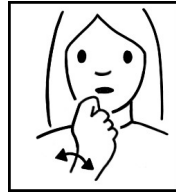
BOX
(normal sign)



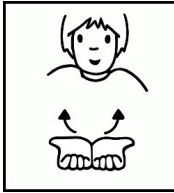
BIG-BOX
(modified)



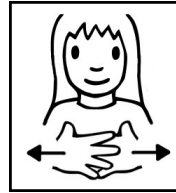
BOWL
(normal sign)



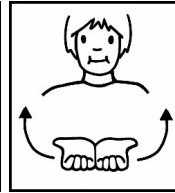
SMALL



SMALL-BOWL
(modified)



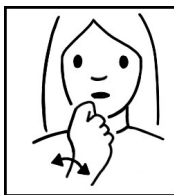
BIG



BIG-BOWL
(modified)



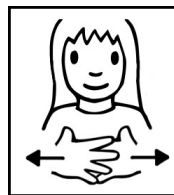
BOAT
(normal sign)



SMALL



SMALL-BOAT
(modified + NMF)



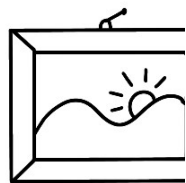
BIG



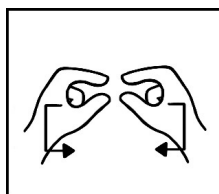
BIG-BOAT
(modified + NMF)



FRAME
(normal sign)



SMALL



SMALL-FRAME
(modified + NMF)

